

STRANGEQUERY

DR

OR:  
HOW I  
LEARNED  
TO STOP  
WORRYING  
AND  
LOVE  
CONFIGURABLE  
JOINS



**Jon Rowand**  
GSCUG July Meeting  
July 14, 2022

# AGENDA

“...fall madly deeply **in love with**  
~~CSS~~ **{{configurable joins}}**  
and if I can't get you to fall in love with it,  
then I'm hoping to at least help you be  
a little bit **less frustrated** by it.”

*Borrowed from*

**- Kevin Powell**

*CSS Evangelist | [YouTube Channel](#)*

# AGENDA

☑ **ReMember** *Or : How I Discovered Configurable Joins*

☑ **ReFrame** *Or : How I Think About Configurable Joins*

☑ **ReLearn** *Or : How I Study Configurable Joins*

☑ **RePay** *Or : How I Pay It Forward with Configurable Joins*

☑ **ReSources** *Or: How I Curate My Memory of Configurable Joins*

☑ **Q & A**

**Disclaimer:**  
Story of my  
personal journey

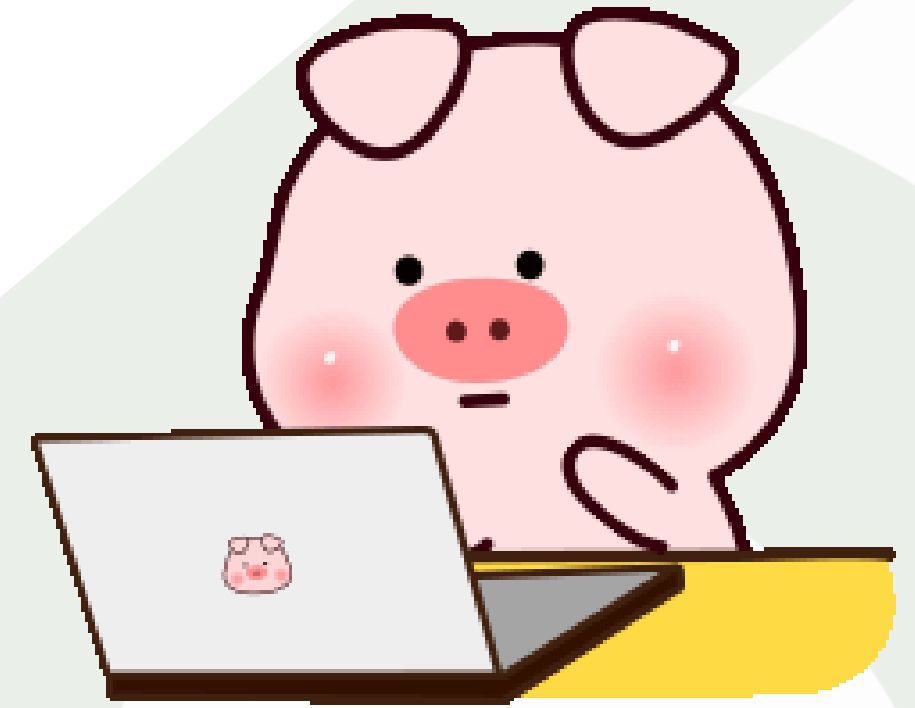
# ReMember

## About Me



# ReMember

**Disclaimer:**  
Not a formally trained  
data analyst



**“You can't make a race horse of a pig.”**

**“No,” said Samuel, “but you can make a very fast pig.”**

**– John Steinbeck**

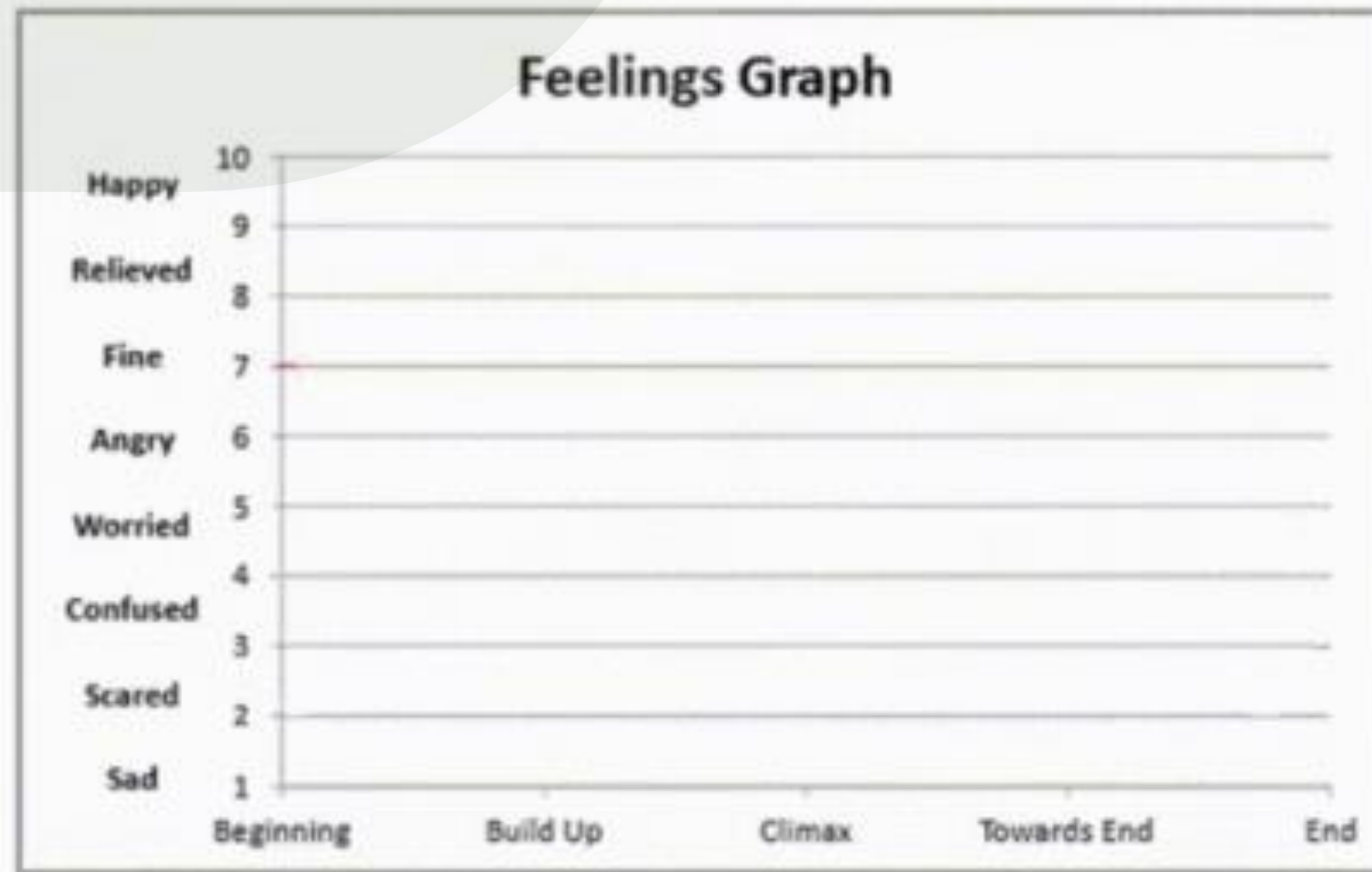
# ReFrame

“We decide what story to tell ourselves. Or whether we will tell one at all.”

– Ryan Holiday

# ReFrame

*In early 2018, configurable joins arrived on the scene to a mixed reception...*



# ReFrame

"I'll wait to learn it until the kinks are ironed out"

"That's over my head"

"It's buggy"

"Here we go AGAIN..."

"It doesn't work"

Technolutions releasing another half-baked feature"

"Thanks, but no thanks"

Local and STL queries work just fine for me.

"If you figure it out, let me know"

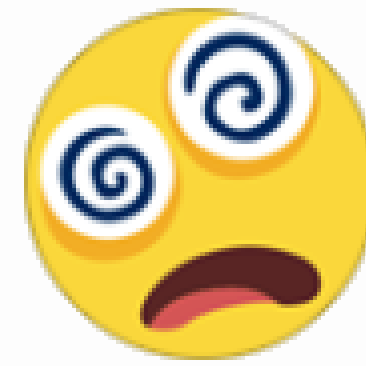
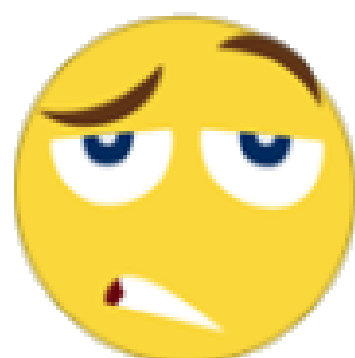
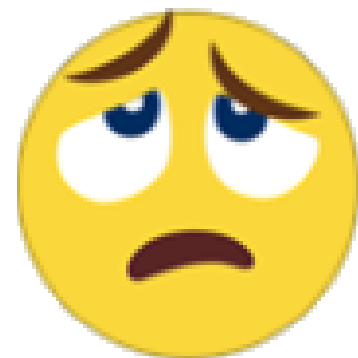




# ReFrame

## The “Why” of Configurable Joins

- ☑ Yes, CJs are inevitable (resistance is futile)...
- ☑ Yes, CJs are the future is now...
- ☑ Yes, CJs are becoming pervasive throughout Slate ...
- ☑ Yes, the Slate Template Library and local exports/filters are inefficient/unsustainable/etc., etc., etc. ...



# ReFrame

## Saying “Yes” to Configurable Joins

### ☑️ **Seek out CJ’s superpowers**

e.g. “Cloned Source Application” join, subquery aggregate functions, independent subquerying

### ☑️ **Celebrate when hitting the walls / finding a CJ limitation**

E.g. no join to sources/source formats and CJs not available in edit prompt conditions

### ☑️ **The joys/relief of workarounds**

E.g. query on Person > Interaction > Subject for Source (if “Hide source interaction” not checked)



# ReLearn

“That is what learning is.  
You suddenly understand  
something you've understood  
all your life, but in a new way.”

– Doris Lessing

# ReLearn



Give me a sec...I have to drop a name.

slate  INNOVATION FESTIVAL

2022

# ReLearn



**Megan Story**



## ***Key Takeaways:***

- ☑ *User Groups: Find your people*
- ☑ *Documentation: KB > ? < Internal/local*
- ☑ *Make Peace with the Process*

**PPT Slides**




# ReLearn



**Matthew  
Schieren**

**What A Long Strange Trip  
It's Been!**



Matthew Schieren  
Assistant Director of Technology Operations

THE UNIVERSITY OF  
CHICAGO

Enrollment and Student Advancement

IF THIS IS ABOUT MATURITY, THEN  
I WANT NOTHING TO DO WITH IT

## ***Key Takeaways:***

- ✓ *Play, play, play, play,  
play, play, play...*
- ✓ *Don't fight yourself  
or the system*
- ✓ *A YOUser Group /  
Looking Beyond Our  
Own Borders*

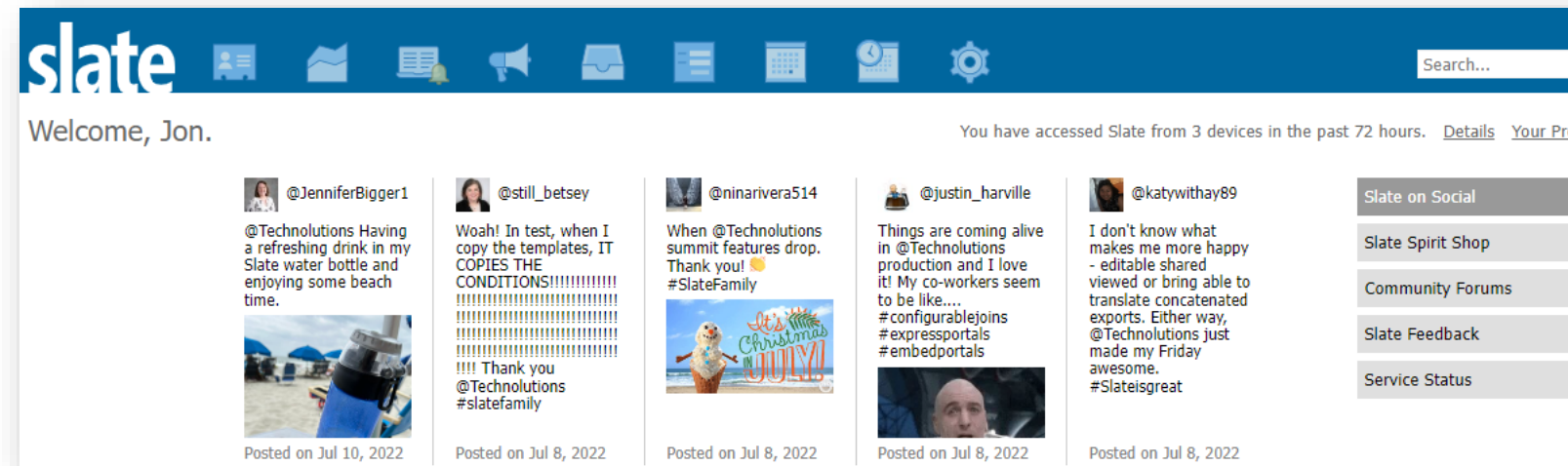
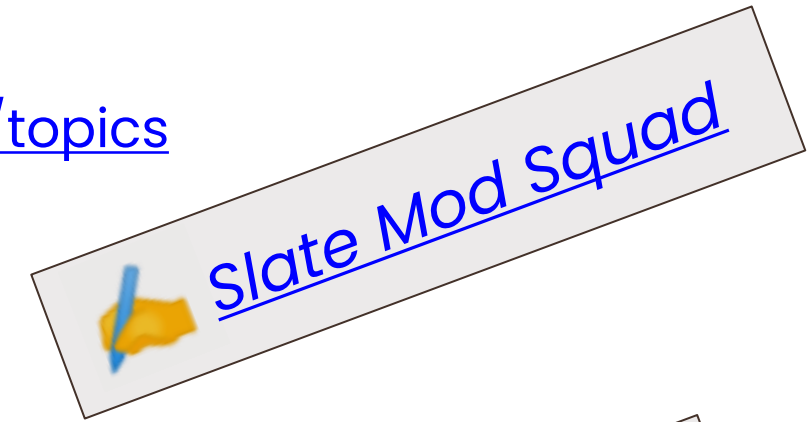
**PPT Slides**





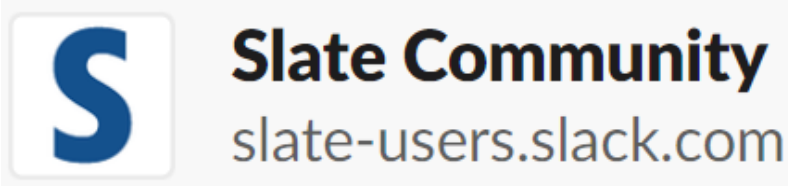
# ReLearn

- ✓ <https://knowledge.technolutions.com/hc/en-us/community/topics>
- ✓ [Admissions – Slate Community User Groups and Meetups](#) (e.g. GSUCG, but also state-based and other affinity groups).
- ✓ <https://feedback.technolutions.com/forums/923530-slate>



- ✓ <https://www.facebook.com/groups/superslatefriends>

- ✓ [https://join.slack.com/t/slate-users/shared\\_invite/enQtNTM4OTgwNDU0NDA2LTZkMDImYzNmNjQ3ZDc4ZjZmODZiMTUzNmM4MTQ4YzRiNmVhODhiNDYxMDViODdhYjU2MDg2MDhhMjk1MWZlZTE](https://join.slack.com/t/slate-users/shared_invite/enQtNTM4OTgwNDU0NDA2LTZkMDImYzNmNjQ3ZDc4ZjZmODZiMTUzNmM4MTQ4YzRiNmVhODhiNDYxMDViODdhYjU2MDg2MDhhMjk1MWZlZTE)



# ReLearn

**You do not rise to the level of your goals. You fall to the level of your systems. - James Clear**

- ☑ Yes, surround yourself with smart people, but get in the habit of asking questions and making “mistakes” in public.
- ☑ Carving out time for learning/experimenting → “CJ Fridays”
- ☑ Early to bed, early to rise
- ☑ Purpose-Driven “Slate Athlete” → Hired a coach
- ☑ Start a local Slate users /mastermind group



# RePay

“When I teach something  
I get to learn it twice”

- Jim Kwik (borrowed from Joseph Joubert)

# RePay

“I've learned that people will forget what you said, people will forget what you did, but people will never forget how you made them feel.”

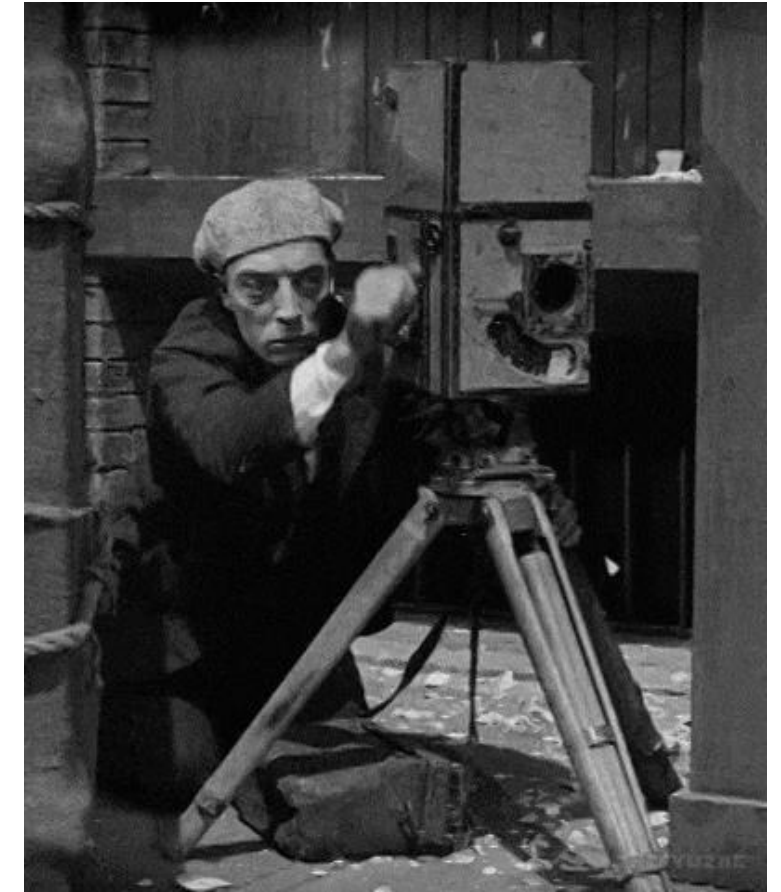
– Maya Angelou



# RePay

## Time for some demos!

- ~~Good Will~~ Hunting for **Application GUID**
- Legends of the ~~Fall~~ **Deposit Date** Local Export
- The ~~Shawshank~~ **Cloned Source Application** Redemption  
(*Case uses for deferrals and term shift processes*)
- Stand by ~~me~~ **Independent Subquery Joins**  
(*Case uses for housing and buddy programs*)



# ReSources



## Knowledge Base Articles

- ✓ [Getting Started with Queries](#) (Articles Section)
- ✓ [Query Exports & Filters](#) (Articles Section)
- ✓ [Configurable Joins](#) (Articles Section)
- ✓ [Configurable Joins](#) (Basic Overview)
- ✓ [How to Build a Query with Configurable Joins](#)

### Configurable Joins

Following

#### Articles

▶ <a href="#">Configurable Joins</a>	▶ <a href="#">Subquery Exports &amp; Outputs</a>	▶ <a href="#">Controlling Access to Configurable Joins</a>
▶ <a href="#">How to Build a Query with Configurable Joins</a>	▶ <a href="#">Subquery Filters</a>	▶ <a href="#">Exporting User Information (Fields Using "User" Prompt)</a>
▶ <a href="#">Dependent Subqueries and Independent Subqueries</a>	▶ <a href="#">Query Library</a>	

# ReSources

## Slate Webinars / Presentations

### Configurable Joins Three-Part Miniseries

- ☑ **Part One: Configurable Joins Fundamentals**

[Overview](#) | [Video](#) | [Transcript](#)

- ☑ **Part Two: Intermediate Configurable Joins Skills and Use Cases**

[Overview](#) | [Video](#) | [Transcript](#)

- ☑ **Part Three: Advanced Configurable Joins Concepts**

[Overview](#) | [Video](#) | [Transcript](#)

Presented by

**RHB**

**Abraham Noel**

**Domenick Rozzi**

**John Michael Cuccia**

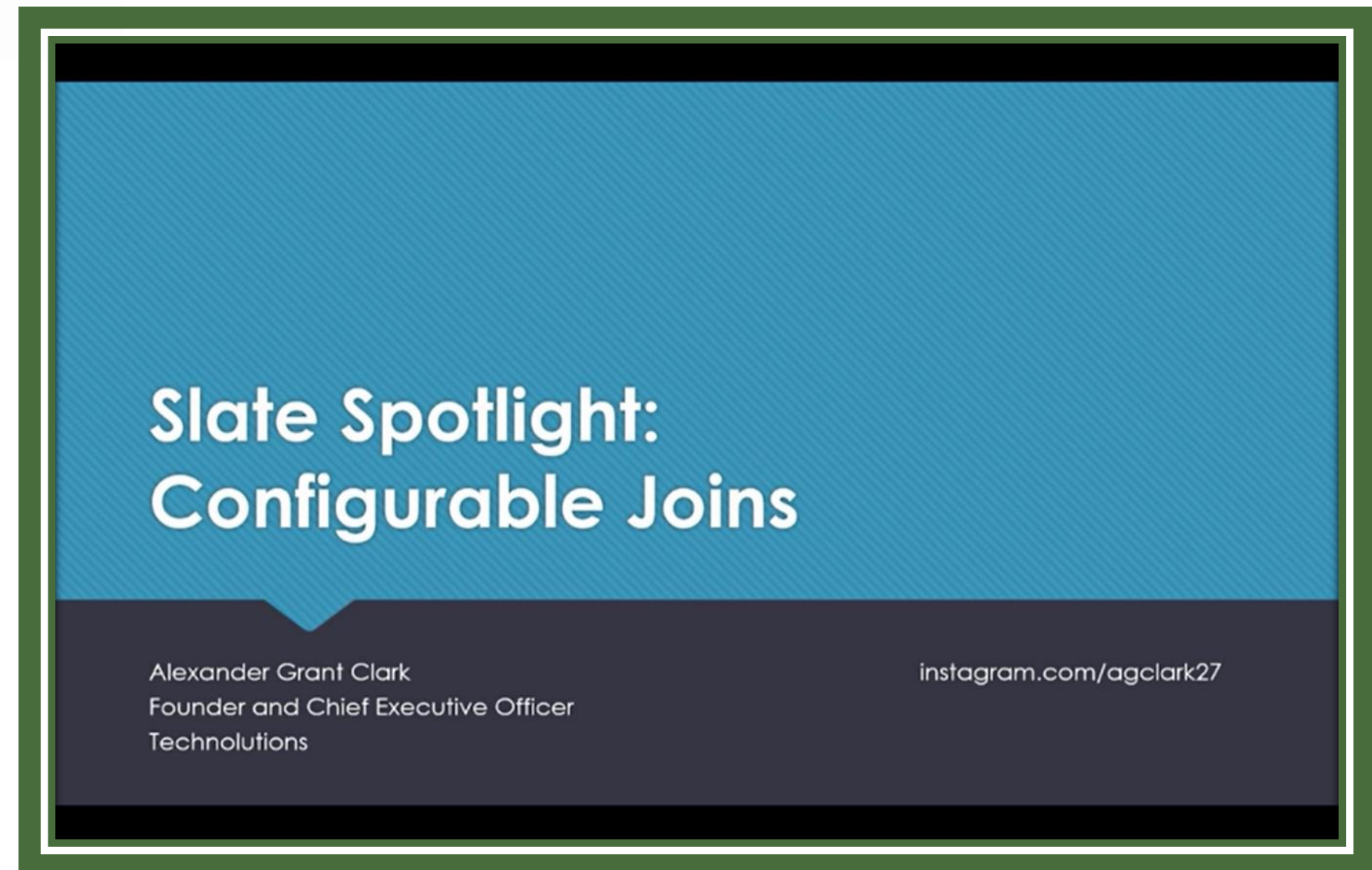
**Megan Miller**

# ReSources

## Slate Webinars / Presentations



[Slate Spotlight: Configurable Joins with Alexander Clark](#)



# ReSources

## Slate Webinars / Presentations

- ☑ [Slate Interactive Encore: Understanding Configurable Joins and How to Use Them](#)
- ☑ **(Subquery) Join Us: Quick Wins with Configurable Joins – Charles Wilson (102 Slides!)**  
[Summit 2022 – Presentation Slides](#) | [Download](#)
- ☑ Using Configurable Joins to Simplify Event Communications in Deliver  
[Summit 2022 – Presentation Slides](#) | [Download](#)
- ☑ Using Queries and Reports to Strategically Support Your Institution  
[Summit 2022 – Presentation Slides](#) | [Download](#)
- ☑ Slate Interactive: May We Join You? Understanding Configurable Joins and Learning How to Use Them  
[Summit 2019 – Presentation Slides](#) | [Download](#)
- ☑ Next Level Reporting Using Configurable Joins  
[Summit 2019 – Presentation Slides](#) | [Download](#)
- ☑ Slate Interactive: Exploring Advanced Querying and Reporting with Configurable Joins  
[Summit 2018 – Presentation Slides](#) | [Download](#)



# ReSources

## Documentation from Slate Schools\*

- ✓ [Slate 102: Admissions, Registration, & Enrollment Services 2021-2022 & Slate Application How to Guides](#)  
**University of Illinois Graduate College**
- ✓ [Admission Information for Staff](#)  
(Slate Guides section | [Slate Guide \(Main\)](#) | [Frequently Used Exports & Filters](#))  
**UC Boulder and credited to Patricia Stanfield**
- ✓ [Slate Resources](#)  
**Case Western Reserve University**
- ✓ [Slate Student Admissions Tools](#)  
(Slate Queries section | [Webinar: Slate Querying](#) + Guides)  
**University of North Carolina at Chapel Hill – Connect Carolina**
- ✓ [Slate Treasure Box](#)  
(Using Queries section)  
**Binghamton University SUNY**

\*Caution – Some sites have dated content that has not been updated for CJs



# ReSources

## Social Posts\*

### Facebook Group – Super Slate Technolutions Friends

- ✓ [Any configurable joins gurus out there...calculate a superscore?](#)
- ✓ ["...Can anyone, especially grad schools, share CJ examples?"](#)
- ✓ ["...why configurable joins are more beneficial when building queries?"](#)  
– Jacob Mattison, Jamie Anthony, Vincente Rodriguez
- ✓ Searches for "[Configurable Joins](#)", "[CJ](#)", and "[Briefcase](#)" (keep an eye out for "[Suitcase](#)")

### Slate Community Forums

- ✓ [Use Cases for Configurable Joins \(Why you should come to the dark side\)](#) – Kelly Connor Lewis
- ✓ [Join to "Field Values" table related to an Entity?](#) – Wyatt Best
- ✓ [Scores Using Configurable Joins](#) – Suresh Rao
- ✓ [Using a subquery export to create a custom checklist table in application stats portal](#) – Kate Boeyen

### Slate-Users Slack Group >> fleeting Only 10,000 most recent messages



**Thank YOU for participating!**

**Any Questions?**

**Jon Rowand**

